

**AMSTERDAM
TECHNOLOGY**

Esweg 2, 7864TG Zwinderen The Netherlands
t. +31 (0) 62481 3560 / +31 (0) 524 291042
f. +31 (0) 84711 0084 / +31 (0) 524 290883
e. info@amstech.nl w. www.amstech.nl

Mini Scanner System for spot weld inspection

patent pending

New product release

About us:

Amsterdam Technology bv, is a new company located in the Netherlands, raised by Amsterdam SES and TechnOLOTHgy bv. These companies have joined their expertise in development of software and mechanical solutions for dedicated ultrasonic scanning systems.

Performance and limitations of immersion tank inspections.

For ultrasonic C-scan image testing, an immersion scanning system will usually give the best performance. But these kinds of scanners have also their practical limitations; the object for inspection has to fit into the immersion tank, even when only a small area is to be inspected.

Amsterdam Technology bv has combined the quality of ultrasonic immersion scanning systems with the practical benefits of handheld instruments by developing a new strongly miniaturised instrument.

Conference
introduction:



**Mini
Scanner**

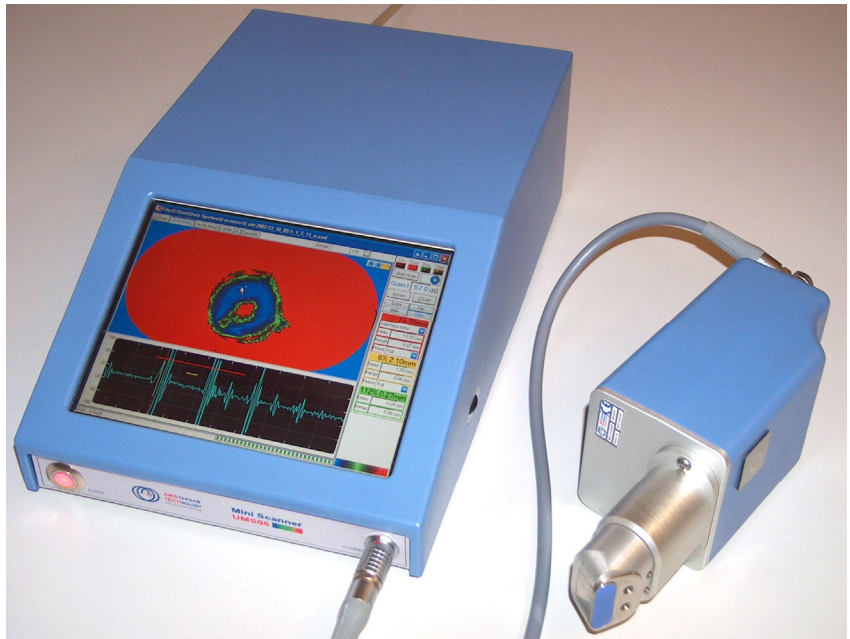
First in the world Amsterdam Technology bv introduces the "Mini Scanner", a handheld high resolution ultrasonic scanning system with full A-scan and C-scan presentations.

The inspection instrument, with software based on Windows XP®, meets the performance of an immersion tank scanning system when a small area is to be inspected. It consists of a small sized handheld scanner with a portable ultrasonic control unit, containing an 8" touch screen panel. The handheld scanner can simply be placed on a test object, i.e. a spot weld and the A-scan is displayed.

Press the scan button and after a few seconds a complete C-scan is presented on screen.

Just by touching a scan point of the C-scan on the screen the corresponding A-scan is displayed directly in a separate window.

All data, including the complete A-scan information, can be stored on the hard disk. This is useful for evaluation purposes and after event setting control. With exchangeable scan-heads for perpendicular or angled scanning position the "Mini Scanner" can be used for a wide range of applications.

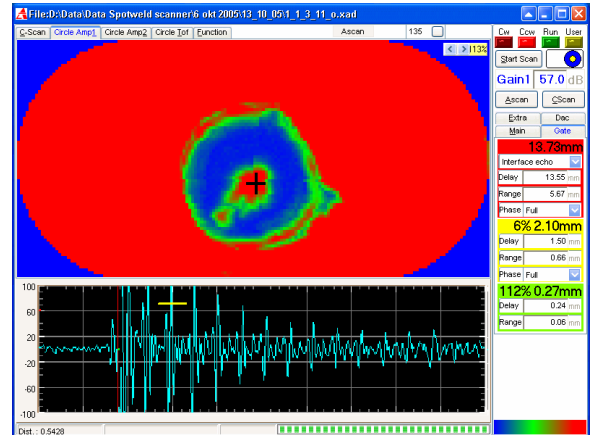


Features:

The Mini Scanner is a complete advanced ultrasonic scanning system, including all the standard system features.

Typical for the Mini Scanner:

- Portable system
- Quick exchangeable scan heads for perpendicular and angled scanner positions
- Standard scan area 10 x 20 mm (0.4 x 0.8 Inch)
- Scan time < 5 seconds, direct C-scan presentation
- Standard scan resolution 0.1 x 0.1 mm (4 x 4 mil)
- Applicable focussed ultrasonic transducers; 20–35 MHz
- Easy to handle by single button operation on scanner
- Just a small amount of gel as couplant needed
- Scanner with integrated gel injector is optional
- Direct C-scan presentation
- A-scan presentation for each scan point
- TOF (Time Of Flight) presentation
- 2 C-scan presentations with independent gate settings, TOF and Amplitude adjustable
- Numerical wall thickness indication
- Cursor controlled dimension measurement in C-scan (i.e. diameter of spot weld)
- After event data evaluation by gate repositioning
- Ultrasonic controller, containing a 8" touch screen panel, scroll wheel, based on a Windows XP® PC
- Ultrasonic settings for typical applications can be stored
- Additional USB devices like keypad or mouse are possible
- Data exchangeable by both USB and WiFi
- Data evaluation software for standard desktop PC available
- Power requirements 120–240 VAC, 50-60 Hz, 150 Watt
- Delivered in a rigid carrying case.



Scanner with gel injection system

Applications:

The Mini Scanner is very useful for detail inspection of large constructions because the Mini Scanner can reach the most difficult places in complex structures.

- **Spot weld inspection** (automotive). A typical application for the “Mini Scanner” is spot weld inspection in the automotive industry. This ultrasonic test method for checking spot welds has proved to be suitable for the classification of welds and in optimising the parameters of welding machines for series production. Applicable for inspection of resistance spot welds as well as laser welded patterns.
- **Riveting joint inspection** (automotive, aerospace). For an automatic gearbox the riveting connection of a torque converter can be inspected from the outside after assembly.
- **Geometrical inspection of machine parts** (automotive, industry). Control of shape in a cast alloy machine part to check the geometry in a particular critical place.
- **Layer control of composite materials** (aerospace, rotor blades). Spot-check testing for control adhesive conditions.
- **Soldering joints control** (automotive, industry). Spot-check testing on critical places of soldered parts.
- **Wall thickness inspection of plates and pipes** (power plants, industry). Spot-check inspection for wall thickness and pitting corrosion of pipes by outside inspection. Special adaptors for scanner positioning on pipes are deliverable on custom specification.

The Mini Scanner is a new instrument and at this moment a lot of new applications are coming up.

Users start working with the Mini Scanner and discover new inspection methods on a very wide range of applications. The Mini Scanner makes fast C-scan inspections possible on places never been inspected until now. Please check our web site for actual developments. www.amstech.nl